




# On the Radar


On the Radar is your fortnightly hub for essential information, updates and reminders. In this edition, Pirongia selected for community cash trial, tourism boost for Waipā, and overnight tree work in Cambridge.

## Save the date! Upcoming events and notable dates



Pre-engagement for Long Term Plan and preferred option for water services - Cambridge Chamber

7.30am-9am Thursday, April 3  
Onyx, Cambridge



Waikeria Prison Tour for Councillors

9-12pm Monday, April 28

# Community Services



## Reserves planning

On March 24, the **extreme health risk warning level at Lake Ngā Roto** was reduced after cyanobacterial (algal bloom) levels dropped. A health warning remains in place however, and Health New Zealand (Te Whatu Ora) advises that the lake should not be used for any recreational activities involving contact with the water while health warnings are active.

This summer's dry, hot weather created the perfect conditions for cyanobacteria. The first public health warning was issued on December 4 when the levels exceeded 904 mm<sup>3</sup>/L (the guideline is 1.8 mm<sup>3</sup>/L). Just two days later, the warning was raised to an extreme health risk as levels hit 1203 mm<sup>3</sup>/L.

Local stakeholders, including clubs and mana whenua, were well prepared, having seen similar patterns in recent years. Contractors closely monitored the lake and reserve for any impact on wildlife, and we're pleased to report that there were no adverse effects.

While the overall outcome for the lake this season was relatively good, the ongoing health warnings highlight the need for ongoing efforts to reduce sediment and nutrients further up the catchment. This is a long-term effort to improve the lake's water quality, and it's something we're actively supporting through the Peat Lakes Accord and other partnerships.

## Park operations

Night-time tree maintenance work will be taking place on Victoria Street in the Cambridge town centre from Sunday, April 13 to Wednesday, April 16. The work will be between 8pm to 6am each evening, and there will be road closures during these hours.

As part of this project, we'll be removing three flowering cherry trees that are no longer in great health – these are the trees located outside BNZ, Gourmet Deli, and Daydream Espresso. We'll also be grinding the stumps and giving the rest of the trees in the area some much-needed TLC.

Our tree maintenance contractor, TreescapE Ltd, will deliver letters to the businesses directly impacted to let them know what is happening, and staff will inform the chair of the Chamber of Commerce.

We'll plant replacement trees this winter, so the town centre will continue to look beautiful for everyone.

### Works will take place:



## Community asstes

For the past few years, we've noticed the kids in Pirongia have been having a great time on the corner of McClure and Belcher Streets, using part of the road verge to dig out their own bike jumps. While it's been lots of fun for them, it's started to create some issues, including damage to the stormwater swale and growing health and safety concerns.

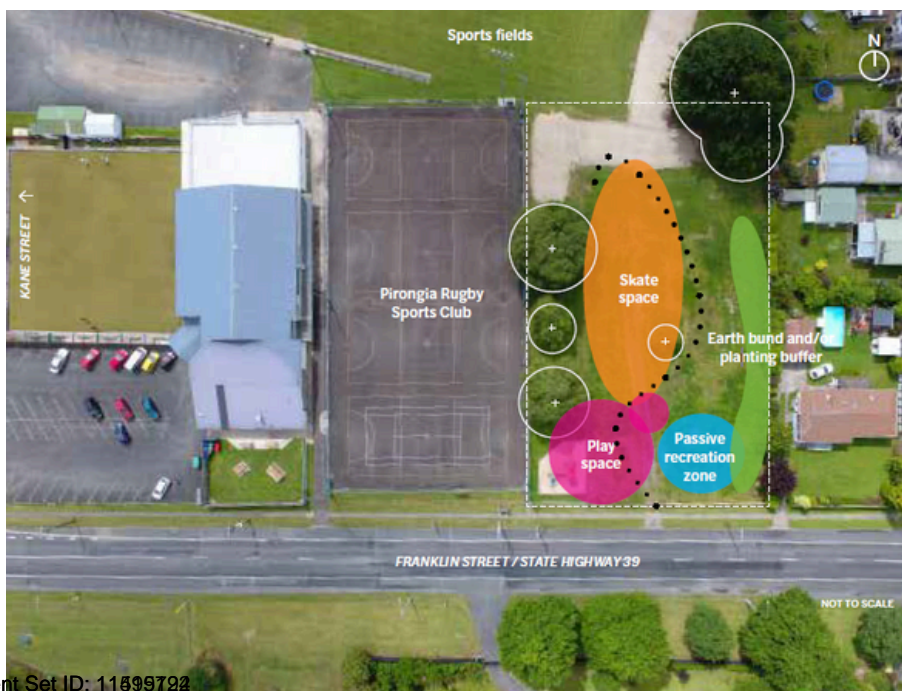
But don't worry – we've got a solution! Now that we've confirmed the site for the new skatepark next to the playground at the Pirongia Sports Park, we're planning to add a mound of soil there. This will give the tamariki and rangatahi a safe space to create their own jumps, and they can keep having fun without causing further issues.

Our Community Advisor Gina has been working with local parents, and they're all on board with the idea. She'll also be meeting with the parents and the young jump enthusiasts onsite on Tuesday, April 1, to chat about the next steps.

We're also getting support from the Pirongia Sports Club, and staff will make sure to keep residents in the nearby properties informed before work begins. When it's time to develop the skatepark, the soil we've placed will be repurposed into a bund along the neighbouring properties, as shown in the concept plan.

Once the soil is in place at the skatepark site, we'll make sure the McClure/Belcher Street verge is sorted too.

As for the skatepark itself – construction timing will depend on community fundraising, now that we've locked in the location and design.



## Libraries

We're excited to share that the bookable community room at Te Awamutu Library now has a name – **Te Puna Kōrero Community Room!**

Staff sought guidance from Ngā Iwi Tōpū o Waipā, who helped us find a name that reflects the room's purpose: a space for engaging in discussions. In te reo Māori, puna means a spring (or source) of water, and kōrero means discussion. So, the English translation of Te Puna Kōrero Community Room is "The Wellspring of Discussion," which we think is a perfect fit for a community room at a library, a place where ideas and conversations flow!

We hope the new name reflects the spirit of connection and conversation in this wonderful space.

## Swimming Pools



Here is how we are able **to help the Waipā Community Facility Trust reduce costs**, following their update to the Service Delivery Committee on Wednesday, March 19.

- We've commissioned an energy consultant to look at the feasibility of replacing some or all of the gas boilers that heat the water at our two district pools with hot water heat pumps. If that turns out to be feasible, the cost of replacement will need to be included in the 2027-37 Long Term Plan. Other funding options will also be explored – such as central government incentives.
- We are investigating air movement through the Perry Aquatic Centre following concerns from the Trust regarding premature failure of electronic systems. This can be caused by a build-up of chloramine, a gas formed when chlorine binds with organic waste matter. To get an accurate reading of chloramine levels in the air, we've scheduled testing for May, once the cooler weather arrives and doors to the outdoor areas stay closed.
- We are also investigating Building Warrant of Fitness costs for the Perry Aquatic Centre to ensure the Trust is being charged by contractors correctly.



This information is provided from Waipa District Council

- Ongoing intermittent network outages are causing faults and/or adding maintenance to their programme of work. As a result of what they thought were power surges, we installed a power filter onto the incoming power supply. However outages continued, and it was later found the cause was one phase of power coming in (and the wider network). We are supporting the Trust with resolving this issue where possible.

## Transport

### Road reseals

Roads set to be resealed around the district over the next two weeks:

- Maungatautari Road
- Luck at Last Road
- Collins Road
- Maungakawa Road
- Brunskill Road

## Growth



The NZ Transport Agency's fast-track proposal to realign State Highway 1 between Cambridge and Piarere is moving forward at a steady pace.

On March 17, **Waipā District Council** was invited to submit feedback on the proposal. We have 20 working days to make our submission, which is due by April 14.

This submission will be a joint effort between Waikato Regional Council, Waipā District Council, and Matamata Piako District Council, ensuring a united voice on the proposal.

As a reminder, the decision on the proposal is expected by July 14 if no hearing is required, or by August 25 if a hearing takes place.

For more details about the application and the fast-track consenting process, you can check out

# Waters

Following an inquiry from Councillors Gower, St Pierre and Stolwyk about the price differences for water connections of varying sizes, we wanted to provide some clarity on how these costs are calculated.

For a standard 20mm water supply connection, the fees are based on our Schedule of Fees & Charges 2024-25, which reflect the average cost to install the connection. These include an application fee (urban \$517, rural \$951) and an installation fee (urban \$1793, rural \$2352).

These fees generally cover the costs for most connections, as they are usually straightforward and located on council roads, rather than State Highways. As a result, they don't involve high traffic management costs.

However, some customers need a 50mm connection, for which the costs are much higher and are charged on a cost-recovery basis. These connections require a local contractor from our Trades Panel, and because they're not as common, we don't have bulk-buying arrangements for the materials. This means we pay retail prices for the pipes and fittings, which adds to the cost.

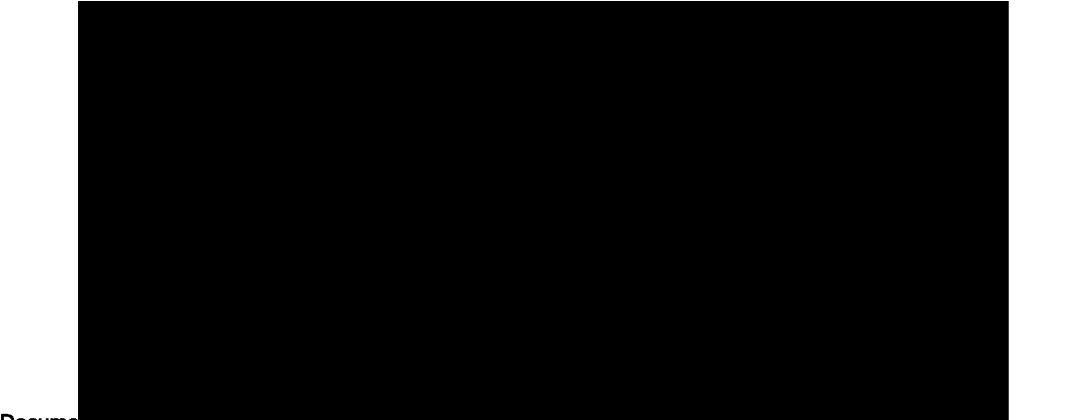
For a 50mm connection, there are two expensive fittings: a high/low flow water meter (around \$3750) and a backflow device (around \$2000). In comparison, a 20mm connection has the backflow integrated into the pipes, costing around \$200 for the whole set-up.

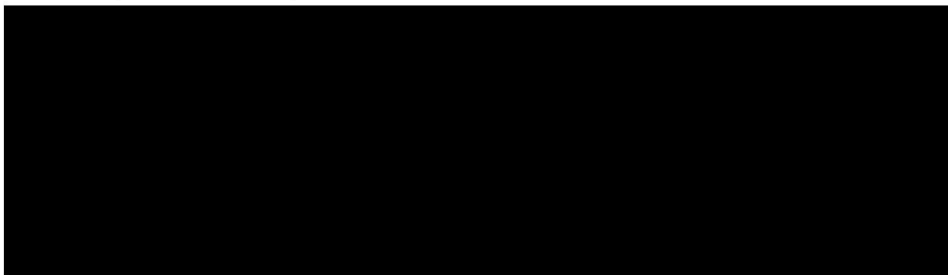
Additionally, if the work is on a busy council road or a State Highway, the traffic management costs can be significant, sometimes running into the thousands.

Reinstatement costs also vary — reinstating a cobblestone footpath, for example, is much more expensive than a concrete footpath or a grass verge.

We hope this helps explain why the costs for different-sized connections can vary so much.

# Economic development





## Tourism



Hot off the press!, Waipā will benefit from the Minister for Tourism and Hospitality Louise Upston's announcement of a \$3 million boost for regional tourism over autumn and winter.

This was raised at this week's Finance and Corporate Committee meeting in the report from Hamilton Waikato Tourism CE Nicola Greenwell.

The programme is aimed at taking visitors beyond traditional hot spots to see more of Aotearoa. There are six successful initiatives – short, sharp marketing campaigns to run between April and July.

Waipā is part of two of the initiatives – a \$600,000 North Island collaboration with Rotorua as the lead, focusing on Australia, and a \$680,000 nationwide campaign led by Auckland, focusing on the US market.

The Regional Tourism Boost contestable fund opened in February with applicants encouraged to collaborate to attract more international visitors to their wider regions over autumn and winter.

Funding comes from the International Conservation and Tourism Visitor Levy.

[You can read the Ministry's media release in full here.](#)

## Media releases

- [March 28: Random order chosen for fair local elections](#)
- [March 28: Cambridge Wastewater Treatment Plant ahead of schedule, on budget](#)
- [March 27: Te Awamutu bridges celebrate history with cultural art](#)
- [March 26: Plan adoption marks watershed moment for Waipā](#)
- [March 25: Calling all Waipā waste-busters!](#)
- [March 25: Pirongia skatepark on the right track](#)
- [March 21: Consultation on Long Term Plan on its way](#)
- [March 14: Waipā District Council successful in bid to increase borrowing limit](#)

## Media clippings

### [Mayor a 'real thing'?](#)

Waikato Times • Newspaper • 22 Mar 2025, 12:00 am

### [Day of Democracy: Water, water, everywhere](#)

Waikato Times • Waipa Matthew Martin • Newspaper • 20 Mar 2025, 12:00 am

### [Park solution sought](#)

Cambridge News • Mary Anne Gill • Internet • 20 Mar 2025, 12:02 pm

### [New reporting style unveiled](#)

Cambridge News • Mary Anne Gill • Internet • 20 Mar 2025, 11:01 am

### [Resthaven's new moon rises](#)

Cambridge News • Mary Anne Gill • Internet • 20 Mar 2025, 8:02 am

### [Council's paper pitch](#)

Cambridge News • Mary Anne Gill • Internet • 20 Mar 2025, 7:00 am

### [It's not quite a water done-deal](#)

Te Awamutu News • Chris Gardner • Internet • 20 Mar 2025, 11:00 am

### [Rest home focus](#)

Te Awamutu News • Viv Posselt • Internet • 20 Mar 2025, 8:00 am

### [Electric buses a buzz for Cambridge bus service](#)

Cambridge Edition • Matthew Martin • Newspaper • 19 Mar 2025, 12:00 am

### [News .... in brief](#)

Cambridge News • Internet • 19 Mar 2025, 4:03 pm



This information is provided from Waipa District Council

[Make mine a double please](#)

Cambridge News • Mary Anne Gill • Internet • 19 Mar 2025, 6:03 am

[Fluoride is coming to town](#)

Waikato Times • Matthew Martin • Newspaper • 19 Mar 2025, 12:00 am

[Waipā gets to borrow more to boost growth](#)

Waikato Times • Matthew Martin • Internet • 18 Mar 2025, 6:17 am

[A \\$2.3 million white elephant: The curious case of Canoe Racing NZ's deserted high performance centre](#)

Radio New Zealand • Dana Johannsen • Internet • 17 Mar 2025, 5:25 am high-performance

[Karāpiro high-performance centre empty as athletes stay in Auckland](#)

New Zealand Herald • RNZ Mar • Internet • 17 Mar 2025, 9:22 am

[Checkout operator asks mayor if her job is 'a real thing'](#)

Waikato Times • Matthew Martin • Newspaper • 14 Mar 2025, 12:00 am

[Waipā plays the Trump card](#)

Te Awamutu News • Mary Anne Gill • Internet • 13 Mar 2025, 1:04 pm

[Mailouts can stay private](#)

Te Awamutu News • Mary Anne Gill • Internet • 13 Mar 2025, 12:02 pm

[Council looks at cycle way issues](#)

Te Awamutu News • Chris Gardner • Internet • 13 Mar 2025, 10:03 am

[Women told: make your voices heard](#)

Cambridge News • Viv Posselt • Internet • 13 Mar 2025, 2:01 pm

[A true community champion](#)

Cambridge News • Viv Posselt • Internet • 13 Mar 2025, 9:57 am

[Waipā mayor gets tick of approval in national poll](#)

Cambridge Edition • Newspaper • 12 Mar 2025, 12:00 am

[Temporary car park booze ban to control 'preloading'](#)

Cambridge Edition • Jo Lines-MacKenzie • Newspaper • 12 Mar 2025, 12:00 am

[News in brief .....](#)

Cambridge News • Internet • 12 Mar 2025, 4:01 pm

[Taxpayer's Union mayor approval ranking: Waikato's top-ranked leaders revealed](#)

New Zealand Herald • Danielle Zollickhofer • Internet • 12 Mar 2025, 6:06 am

[Te Huia looks to Sunday service](#)

Waikato Times • Matthew Martin • Internet • 11 Mar 2025, 6:24 am