

SEE INSIDE

SPECIAL WRAP

CAMBRIDGE News



Teddy Bears' Picnic

Come along to the Cambridge Model Engineering Society (Big Trains) and Model Railway (Little Trains) Teddy Bears' Picnic. Bears and their owners ride the train free, adults gold coin koha – profits to Community House.

WHEN: Sun 2 April
AT: 10am
WHERE: Leamington Domain
ENTRY: Free

FREE ENTRY

YOUR ONLY LOCALLY OWNED TEAM

29 Victoria St (south end) Cambridge
Phone 827 6016 | will.floor@xtra.co.nz

WILSON'S FLOORING CURTAINS BY **WILSON'S**



Whizz Bang Science

Bubbles put a smile on the faces of young and old but what is it that makes them so magical? Science of course! Come on a journey of discovery and see what makes bubbles so incredi-bubble!

WHEN: Sat 25 March
AT: 11am
WHERE: Cambridge Primary School Hall
ENTRY: Free. Suitable for all ages.

FREE ENTRY

COONEYLAW
BARRISTERS & SOLICITORS

22 Dick Street, Cambridge | Ph 07 823 1555
www.cooneylaw.co.nz

SPONSORS, FUNDERS AND PARTNERS OF THE CAMBRIDGE AUTUMN FESTIVAL:

MAJOR SPONSORS



MAJOR FUNDERS



MEDIA PARTNERS



GOLD SPONSORS



SILVER SPONSORS



BRONZE SPONSORS



DELIVERY PARTNERS



Cambridge Can Dance

Cambridge is home to many talented dancers. Come along and see this colourful dance showcase. There will be contemporary dance and ballet; Latin and ballroom; and dancing from across the globe – Scottish dancing, Chinese, Indian, Japanese, Highland and more.

WHEN: Fri 31 March
AT: 7pm
WHERE: Cambridge Town Hall
ENTRY: Koha

With support from:

AUTUMN ARRIVALS
IN STORE NOW

Footloose **TOTALLY LOCALLY** **LAYBUY**

46 Duke St, Cambridge, P 07 827 0605. footloose.co.nz



Harp and the Lyre

Book Talk & Musical Event for all ages. Join local author Holly Christina as she talks about publishing her first novel the Harp and the Lyre. The evening will include musical presentations by Holly which are included in the book.

WHEN: Fri 24 March
AT: 6.30pm
WHERE: Cambridge Library, 23 Wilson Street
ENTRY: Free
REGISTRATION: appreciated for seating purposes, via www.waipalibraries.org.nz/events/harp-and-the-lyre-book-talk-and-musical-event/235

FREE ENTRY

Hours:
Mon-Fri - 8.30am - 5.00pm,
Sat - 8.30am - 2pm,
Sun - 10am - 2pm.

paperplus
TICKLE IMAGINATION

Paper Plus Cambridge
54 Victoria St Cambridge | Ph 07 827 4360
www.paperplus.co.nz

THE CAMBRIDGE AUTUMN FESTIVAL
Short Story Competition

THEME: A hard day's work
Short Story Competition

The entries are in, judging is underway, and the excitement is building to see who will take out the prizes in this year's Cambridge Autumn Festival Short Story Competition. Winners will be announced on Thursday 23 March - good luck to all the entrants.

With support from:

cooney insurance
life | income | health

MAURICE TRAPP GROUP
A certain future.

Proud sponsor of the Cambridge Autumn Festival short story competition for 11 years

07 827 8130 | www.cooneyinsurance.co.nz

WIREMU WEKA
TREKS THE ALPS

Trek with a Weka

A fun morning of story-telling and audience participation. Come along to see a real stuffed weka and listen to author Kinsa Hays tell the adventurous tale of Wiremu Weka Treks the Alps. Best for ages 7-10 years.

WHEN: Sat 1 April
AT: 10am
WHERE: Cambridge Library, 23 Wilson Street
ENTRY: Free

FREE ENTRY

WAIPĀ DISTRICT LIBRARIES

VISIT US **LATE NIGHTS** Wednesday and Friday **5.00-8.00pm** and Saturday's **9.30-1.00pm**

www.waipalibraries.org.nz | waipalibraries@waipad.govt.nz

WAIPĀ DISTRICT LIBRARIES

INTRODUCTION TO WRITING FOR SELF-PUBLISHING
with Trudi Caffell

Introduction to Writing for Self-Publishing Course

For adults wanting to write a book and have it self-published, join Trudi Caffell for an introductory course of six weeks. Topics will include: writing a commercial fiction novel, plotting, getting the genre right, marketing and self-publishing.

WHEN: Six-week online course, via Zoom, 6.30pm-8pm Wednesdays 29 March - 3 May
TICKETS: \$120 for the six-week course. Register www.waipalibraries.org.nz/events/introduction-to-writing-for-self-publishing/188

THE CAMBRIDGE AUTUMN FESTIVAL
24 March-2 April 2023



www.cambridgeautumnfestival.co.nz





Big Band Bonanza

The Hamilton Big Band is a prominent feature of Hamilton's jazz scene. They are a constantly evolving band and play a variety of music including Swing, Latin, Waltz, Rock 'n Roll, Funk, Contemporary Pop and Big Band standards. Always an entertaining experience!

WHEN: Sat 1 April
AT: 3pm
WHERE: Te Awa Lifecare Village – The Woolshed Village Centre, 1866 Cambridge Road
TICKETS: \$20 from Paper Plus Cambridge or online at www.humanitix.com* Snacks and refreshments available for purchase.

With support from:



Jono Gibson
Funeral Director



Cambridge, your stories are in safe hands.

07 827 7649
legacyfunerals.co.nz



Thursday Night Blues

Canadian performers Big Johnny Blue and Tina Turley feature in this special concert backed by the Kiwi Blues Connection musicians. Pioneer of the Hammer Blues style, Big Johnny has been making music since he was 14. Vocal powerhouse Tina Turley is an established country crooner with an unmistakable bluesy, rock 'n' roll edge.

WHEN: Thurs 30 March
AT: 7pm
WHERE: Te Awa Lifecare Village – The Woolshed Village Centre, 1866 Cambridge Road
TICKETS: \$25 from Paper Plus Cambridge or online at www.humanitix.com* Snacks and refreshments available for purchase.

With support from:



Forsyth Barr is proud to support the Cambridge Autumn Festival

48 Empire Street, Cambridge | 07 823 0800
forsythbarr.co.nz **FORSYTH BARR**



Paint it Jazz Live Art Performance & Auction

Integrating live painting and live music, abstract artist Richard Adams is teaming up with realist Neal Palmer to work in public at this unique event. They will be painting on-stage as the Nairobi Trio inspires and entertains playing freeform jazz. The completed art will be auctioned in support of Hospice Waikato on the night.

WHEN: Fri 31 March
AT: 7pm
WHERE: Te Awa Lifecare Village – The Woolshed Village Centre, 1866 Cambridge Road
TICKETS: \$25 per person, or \$150 for a table of six, from Paper Plus Cambridge or online at www.humanitix.com* Snacks and refreshments available for purchase.

With support from:



Specialist Healthcare Agency
A Passion to Care
0800 896 772
info@novahealth.co.nz
www.novahealth.co.nz



THE CAMBRIDGE AUTUMN FESTIVAL Photo Exhibition

THEME: A hard day's work

Photo Exhibition

Exhibition of the top entries in this year's Cambridge Autumn Festival Photo Competition themed "A hard day's work" - a snapshot in time of Waipā and our people. We know that Waipā is a great place to work and play, see how the entrants have interpreted the theme.

Visit the exhibition and vote for your favourite in the People's Choice Award.

With support from:



CAMBRIDGE POLICE HUB - PAUA ARCHITECTS



TE AWA LIFECARE MAIN STREET CARNIVAL and ART MARKET

Come along to the Main Street Carnival and Autumn Art Market!

Town comes alive on this huge community day. Bring the whole family and enjoy the vibe as musicians, dancers and entertainers perform.

The footpaths are brimming with original art, photography, jewellery, pottery, sculpture, woodwork and more. Watch, learn and chat with working artists, and enjoy the fantastic shopping!

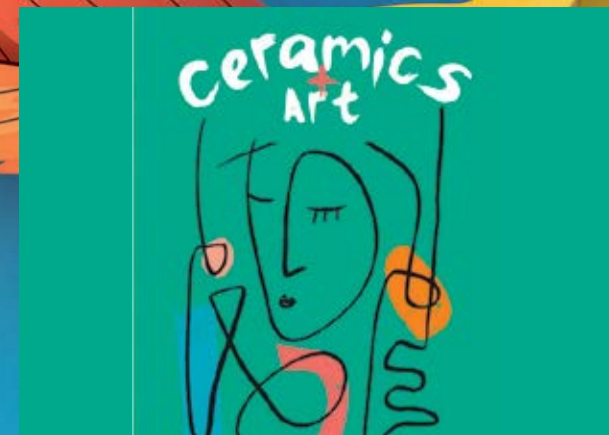
Details of the scheduled performances will be in the Cambridge News and Te Awamutu News on 23 March.

WHEN: Sunday 26 March
AT: 10am – 2pm
WHERE: Victoria Street and surrounds
ENTRY: Free

FREE ENTRY



TE AWA Lifecare Village
"Helping our people make the most of every day"
1866 Cambridge Road
Ph 07 827 6103



Art Attack

Ceramics + Painting + Pottery Exhibition

Don't miss this wonderful exhibition - all items are for sale. Here's your chance to buy that future heirloom or that piece that will give your home the wow factor! Includes stunning ceramics, paintings, and pottery. Come and find your new favourite artwork at this beautifully curated exhibition in the historic Cambridge Town Hall.

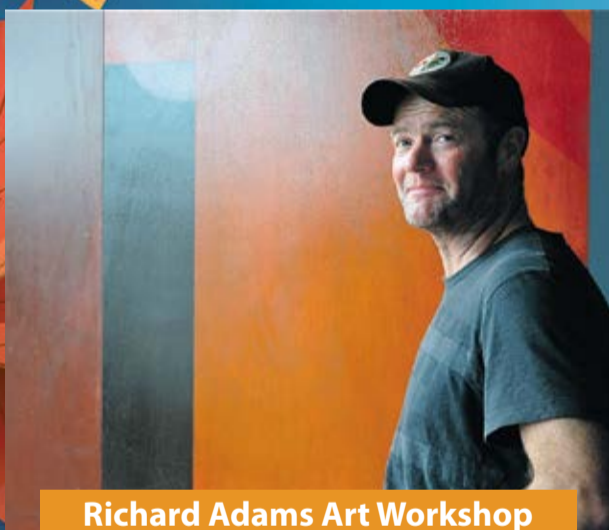
Brought to you by the Cambridge Community Arts Council.

WHEN: 10am–4pm Friday 24 - Saturday 25 March, 10am–3pm Sunday 26 March
WHERE: Cambridge Town Hall
ENTRY: Free

FREE ENTRY

MITRE 10 MEGA
CAMBRIDGE
Cnr Oliver & Queen St, Cambridge

Phone: 823 0553 | www.mitre10mega.co.nz



Richard Adams Art Workshop

Extended two-day workshop! Renowned New Zealand abstract artist Richard Adams will run an art workshop for painters of all skill levels – "Grand Gestures with an Abstract Painting on Location". This painting workshop will investigate the many essential elements and processes that form a painting, including under-painting, mark-making, gesture and layering. BYO lunch, paints and brushes. Paper supplied.

WHEN: Sat 1 & Sun 2 April
AT: 10am-2pm
WHERE: Taylor Made Community Space, 22a Taylor Street
TICKETS: \$120 online at www.humanitix.com*



Beginners' Clay Workshops

For Children and Adults. Get your hands dirty and create a hand-built project under the guidance of ceramicist Gerlinde Weinzettl. A ceramicist by trade, Gerlinde worked in the ceramics industry in Austria before coming to New Zealand in 1993. Spaces limited. All materials supplied.

WHEN: Sat 25 March
AT: Children (8-15 years) 9.45am – 10.45am
Adults (16 and above) 11.15am – 12.15pm
WHERE: Cambridge Library, 23 Wilson Street
REGISTRATION REQUIRED: Cash only.
Children \$5 - <https://www.waipalibraries.org.nz/events/beginners-clay-workshop-children/72>
Adults \$10 - <https://www.waipalibraries.org.nz/events/beginners-clay-workshop-adults/71>



Passio by Musica Bella

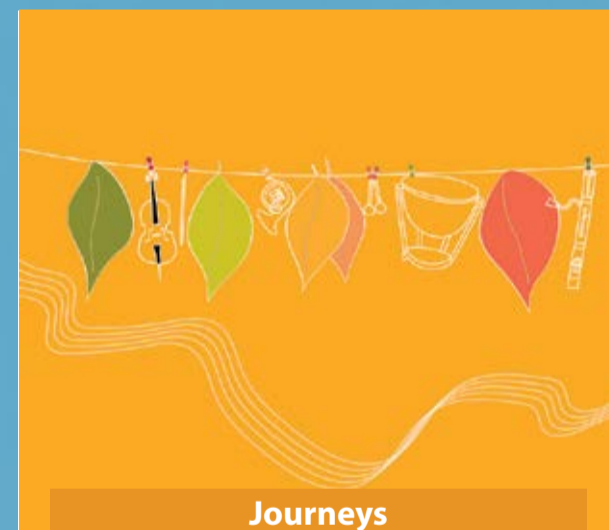
Contemplative music for the Easter season. With the reflective season of Lent upon us and shorter autumn days, join the Musica Bella performers for an evening of soulful connection with the season through music. Works from the baroque to the romantic will soothe your soul, warm your heart, and connect you deeply with the changing season.

WHEN: 28 March
AT: 7pm
WHERE: St Andrew's Church
TICKETS: \$25 from Paper Plus Cambridge or online at www.humanitix.com*

With support from:



HERBERT MORTON
Ph 823 1203
19 Victoria St, Cambridge
hello@herbertmorton.co.nz
www.herbertmorton.co.nz



Journeys

Join the exceptional young musicians of the Youth Orchestra Waikato on a musical journey from London, to dancing through the Czech Republic, a snowy sleigh ride, and coming home to Aotearoa with Garth Farr's Voyages. Also featuring cello soloist Keira Sullivan performing Saint-Saëns Allegro Appassionato. This is a one hour family friendly concert.

WHEN: Sun 2 April
AT: 3pm
WHERE: Cambridge Town Hall
TICKETS: Adult \$12, Child \$3, Family (2 adults, 2 children) \$25 from Paper Plus Cambridge or online at www.humanitix.com*



Proud to support Cambridge Autumn Festival



helloworld Travel Cambridge
Cnr Victoria & Duke st | 07 827 5100



Kai @ the Marae

Waipā and the Waikato are abundant with wetlands and a vast network of waterways. We would like to invite you to enjoy a meal that represents our environment and some of the history of Māori cuisine in our community.

Join Melissa Hetaraka Teesdale and her team for Kai @ the Marae in Cambridge. All welcome. Seating will be at long tables. Your ticket includes entree, main, dessert and a non-alcoholic drink.

WHEN: Fri 24 March
AT: 7pm
WHERE: Cambridge Community Marae, 3 Bracken Street
TICKETS: Bookings essential by 16th March. \$75 per person from Paper Plus Cambridge or email Melissa Hetaraka Teesdale waicafenz@gmail.com
For dietary requirements please also email waicafenz@gmail.com

Supporting your community
Van Dyks
Turning houses into homes.



BedsRus Living FLOORING XTRA

*Cash or Eftpos payment at Paper Plus Cambridge.

Fees may apply when purchasing tickets from www.humanitix.com

NEW WORLD Cambridge
Cnr Anzac & Alpha St Cambridge | [/NewWorldCambridge](https://www.facebook.com/NewWorldCambridge)